

TEMPTRACKING™ FOR ENVIRONMENTAL MONITORING

Unsafe temperature and humidity ranges can affect patient safety and the financial bottom line. Hospitals need to report, measure and monitor temperature and humidity-controlling devices and climate-controlled rooms such as refrigerators, freezers and operating rooms that contain medications, food products, and blood and tissue samples to assure compliant temperature and humidity ranges.

The TeleTracking RTLS TempTracking™ application eliminates manual environmental status logging, stores documented responses and allows improved response time to potentially unsafe temperature ranges ultimately improving patient safety and the financial bottom line.

TempTracking monitors and transmits real-time temperature and humidity information by leveraging real-time locating system technology. The TempTracking™ application provides reports via any web-based computer connected to the hospital's intranet, and presents various visual alerts when temperature and humidity levels are recorded outside pre-set parameters. Documented responses can be electronically recorded and are stored within the application.

Automated 24/7 environmental status logs help to eliminate manual documentation and human error. Staff receives alerts when temperature and humidity levels deviate from preset parameters to take proactive corrective measures.

The probe-based Temperature and Humidity Sensor Tag can be used as a standalone solution or deployed alongside the other TeleTracking® RTLS solution offerings.



Detachable probes make it easy to customize ranges and facilitate trouble-free cleaning.

* KEY BENEFITS

- Accurate and reliable remote environmental monitoring
- Reduce potentially unsafe environmental ranges by proactively identifying and reacting to out-of-range temperature or humidity levels
- Keep food, medicine and specimens from spoiling, avoid the spread of infection, and keep patients comfortable and safe
- Automates measurement and logging with customizable reporting rates
- Dual-probe functionality reduces the amount of devices required by using a single sensor to monitor two temperature probes.
- Monitor temperature ranges from -200C to 200C and humidity levels from 0% to 100% reliably and accurately
- Alerts (visual/email) occur when temperature and/or humidity is above or below preset parameters to enable immediate reaction and corrective action logging
- Provides automated 24/7 temperature and humidity logs for regulatory compliance reporting that eliminates manual documentation and human error
- Meets and complies with NIST Certification and Calibration
- Detachable probes make NIST certification easy

HOW TEMPTRACKING WORKS



DUAL-PROBE-BASED TEMPERATURE SENSOR TAG

1. ENABLES BETTER COMPLIANCE

TeleTracking RTLS TempTracking tags monitor refrigerator, freezer and warmer temperature ranges automatically to help ensure temperature sensitive contents remain at the proper temperatures in compliance with guidelines and regulations.

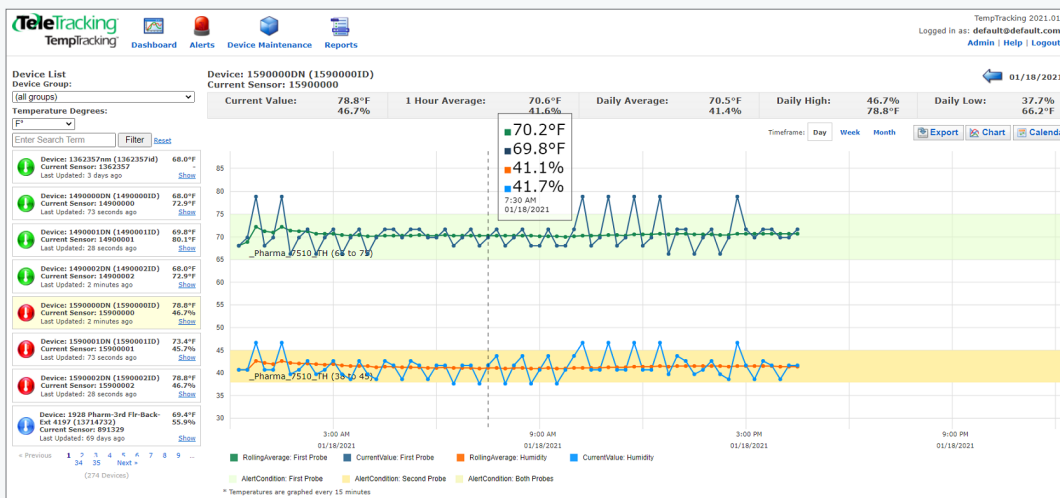
2. SAVES MONEY AND AVOIDS LOSS

Fewer staff hours are required to manually track and report temperatures. Hospitals can mitigate the potential financial loss that could occur if certain medications, specimens, biological products or food spoil because they have not been stored at the required constant temperature.

3. CONTINUOUS RELIABLE MONITORING

Consistent with all TeleTracking RTLS components, the TempTracking Tag uses a patented technology assuring fast, accurate response times and ongoing reliable monitoring. When any portion of the network or server system is unavailable, the tags cache data until access to the system is restored.

DASHBOARD



MONTHLY REPORT

Day	Probe 1 - Average ° F	Probe 2 - Average %	Probe 1 - Low ° F	Probe 2 - Low %	Probe 1 - High ° F	Probe 2 - High %
01/01/2021	-	-	-	-	-	-
01/02/2021	-	-	-	-	-	-
01/03/2021	-	-	-	-	-	-
01/04/2021	-	-	-	-	-	-
01/05/2021	-	-	-	-	-	-
01/06/2021	-	-	-	-	-	-
01/07/2021	-	-	-	-	-	-
01/08/2021	-	-	-	-	-	-
01/09/2021	-	-	-	-	-	-
01/10/2021	69.9°F	39.8%	62.6°F	27.7%	78.8°F	46.7%
01/11/2021	70.5°F	41.4%	66.2°F	37.7%	78.8°F	46.7%
01/12/2021	70.5°F	41.4%	66.2°F	37.7%	78.8°F	46.7%
01/13/2021	70.5°F	41.4%	66.2°F	37.7%	78.8°F	46.7%
01/14/2021	70.5°F	41.4%	66.2°F	37.7%	78.8°F	46.7%
01/15/2021	-	-	-	-	-	-
01/16/2021	-	-	-	-	-	-
01/17/2021	70.5°F	41.4%	66.2°F	37.7%	78.8°F	46.7%
01/18/2021	70.5°F	41.4%	66.2°F	37.7%	78.8°F	46.7%
01/19/2021	70.5°F	41.4%	66.2°F	37.7%	78.8°F	46.7%
01/20/2021	70.4°F	41.1%	66.2°F	37.7%	78.8°F	46.7%